

TOOLBOX TALKS

The Upside of Safety



AERIAL LIFTS

BOOM LIFT

- Extendable boom platforms
- Articulating (jointed) boom platforms
- Any combination of the above
- Generally can carry 1-2 people depending on the size and manufacturers limits
- Personal Fall Arrest System is required



HAZARDS

- Occupant Ejection: Boom lifts can act as a catapult with the right amount of speed and force from bump. Because of this, a fall restraint is required to be worn with your Personal Fall Arrest System.
- Electrocution: Do not use lifts within 10 ft of energized power lines.



VS.

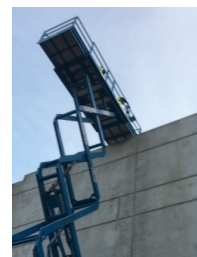
SCISSOR LIFT

- Platform that only raises and lowers straight up and down
- Driven by an operator inside the work platform and is generally designed to carry more than one person
- Personal Fall Arrest System is recommended but not required



HAZARDS

- Falling Out: While a Personal Fall Arrest System with a fall restraint isn't required, it's recommended.
- Tip Overs: Tip overs can occur from overloading, sudden movements, holes/soft surfaces, or weather conditions (wind).
- Operator Pinned by Overhead Object: Always pay attention to what's above you.



A LOOK AT THE
TOOLBOX TALKS

