

TOOLBOX TALKS

The Upside of Safety



Powered Industrial Trucks?

A powered industrial truck, also known as a forklift, lull, pettybone, telehandler, etc. is a common machine used on job sites to move heavy material. OSHA has seven different classes of powered industrial trucks. The class seen on most construction sites is the class VII (telehandler). When working around these dangerous machines, it is important to follow these safety protocols:

Trained Operators Only

Only workers who have been trained on the safe operation of a powered industrial truck can operate these machines. OSHA has specific training requirements that must be followed including:

- o Classroom training on hazards and safe use
- o Hands on evaluation for each class powered industrial truck you operate

Operators must get evaluated on operation every 3 years, if an accident occurs, or if work conditions change.



Watch for Pedestrians

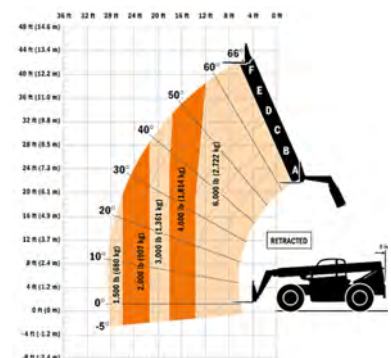
10% of powered industrial truck fatalities are from pedestrians getting run over. This is especially a concern with class VII powered industrial trucks because the cab presents a huge blind spot to the operator.

When working around these machines, always be paying attention. Do not put yourself in the blind spots of the operator.

As the operator sound your horn often to alert pedestrians and make sure your back up alarm is working properly.

Things to Remember

- Never lift a load that your powered industrial truck cannot handle. Check the data plate of your powered industrial truck to ensure lifting capacity
- Follow the powered industrial trucks load chart. The higher and further away from the cab of the lift, the less your machine will be able to lift.
- Never lift a pedestrian using only the forks. Only used manufacturer recommended man lift attachments.



TOOLBOX TALKS

The Upside of Safety



✓ SAFETY CHECK

All operators have been trained on the class of lift they are operating?

Operators can explain the load chart?

All safety features are operational including the horn and back up alarms?

The appropriate class of powered industrial truck has been selected for the job?

Company:

Location:

Presenter:

Date:

ATTENDANCE SHEET